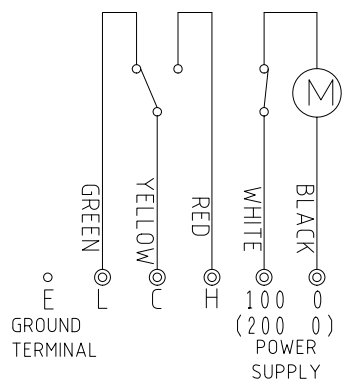


FLAMEPROOF TYPE CABLE GLAND

\*Please specify the cable gland type.

CABLE GLAND TYPE	Range of acceptable cable size
SXC-16B-1	φ 10~φ 12
SXC-16B-2	φ 8~φ 10



MICRO SWITCH  
 250V AC 6A RESISTIVE LOAD  
 250V DC 0.5A RESISTIVE LOAD

COLOR : 10YR7.5/14  
 DETECTION TORQUE : About 10.0N · cm  
 REVOLUTION : 1RPM  
 AMBIENT TEMPERATURE : -10 ~ +40°C

	POWER SUPPLY	APPLICATION TYPE DESIGNATION
	AC100V	PRL-5-WP
	AC200V	PRL-5-VP

APPROVAL No.: T66814  
 APPLICATION RANGE: d2G4  
 EXPLOSION-PROTECTED CONSTRUCTION: d  
 EXPLOSION CLASS: 2  
 IGNITABILITY: G4

Q'ty:

図曆 CHANGE NOTICE 承認 APPROVED 検図 CHECKED 製図 DRAWN ohno	第三角法 THIRD ANGLE PROJECTION	尺度 SCALE 1:2.5	日付 DATE Mar, 2, 2016	名称 TITLE PRL-F7 PADDLE TYPE LEVEL SWITCH
				図面番号 DRG. No. HR-91202
東和制電工業株式会社 TOWA SEIDEN INDUSTRIAL CO., LTD.				